

The Bitterroot- 2,670 sq. feet, 3 Bedrooms, 2 Baths



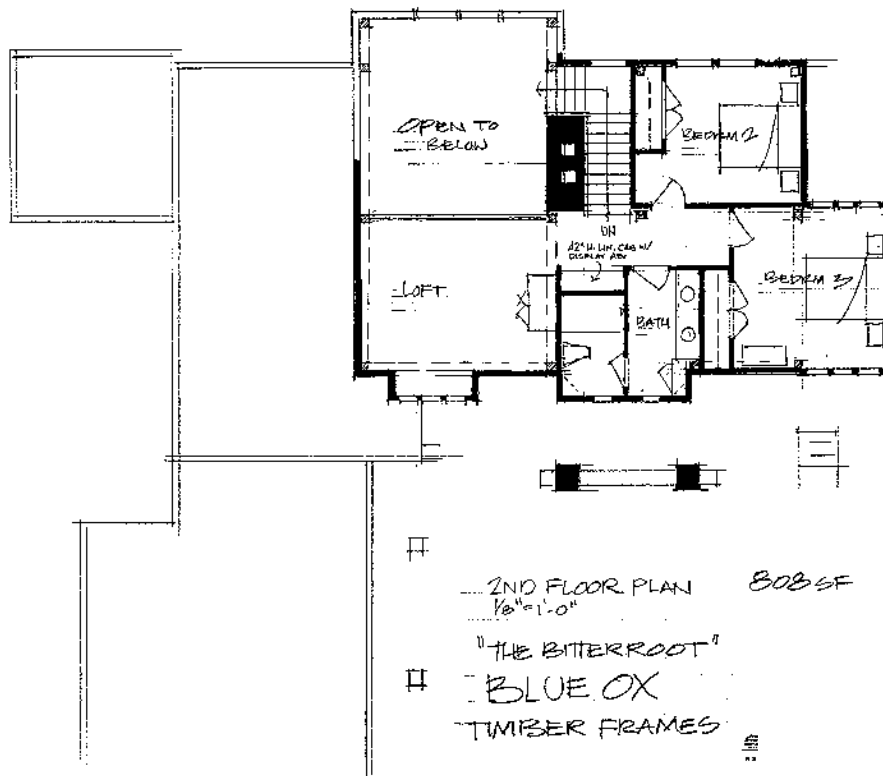
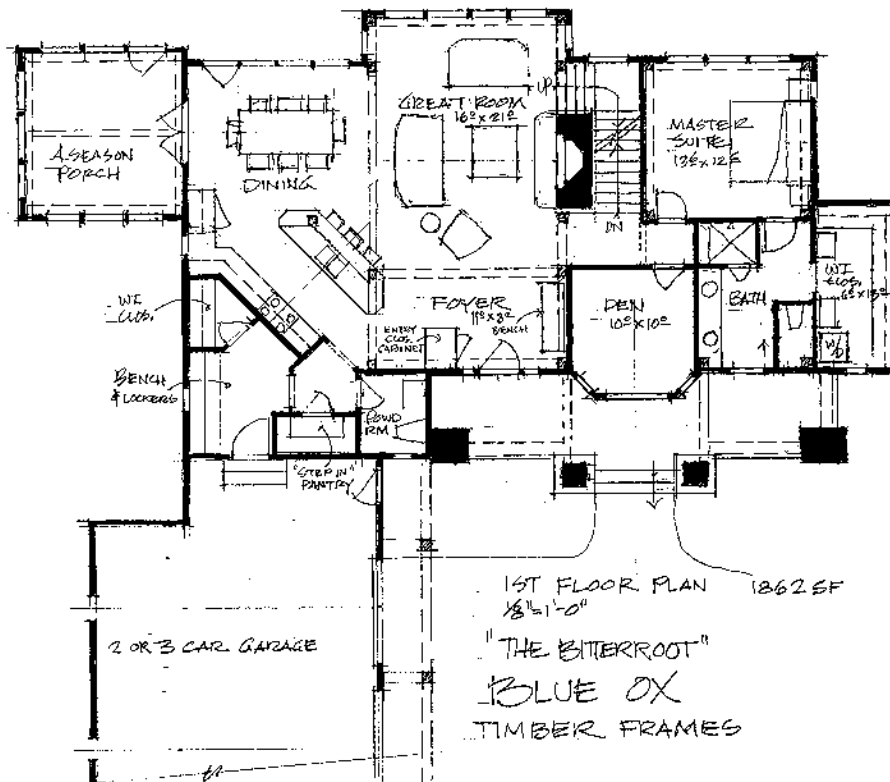
The Bitterroot features a versatile open floor plan designed for both entertaining and casual family living. With the unique design of the wrap stairway around a beautiful two story fireplace, an open angled kitchen, and expansive glass, views can be enjoyed from every room.

The location of the kitchen and step-in pantry makes the kitchen both practical and functional. The oversized mudroom will be utilized by both busy families and people with an active lifestyle. This home's casual design is sure to set the mood for many family memories.



Phone: 320.763.9003 • 4941 HWY 27 E • Alexandria, MN 56308
www.BlueOxTimberFrames.com • Email: Info@BlueOxTimberFrames.com
©2010 Blue Ox Timber Frames

The Bitterroot- 2,670 sq. feet, 3 Bedrooms, 2 Baths



The Bruneau- 2,830 sq. feet, 3 Bedrooms, 3 Baths



Stately columns define the classic central entry of this home. The foyer opens to views of the magnificent great room and fireplace. The open floor plan lends well to family living and entertaining for those special events.

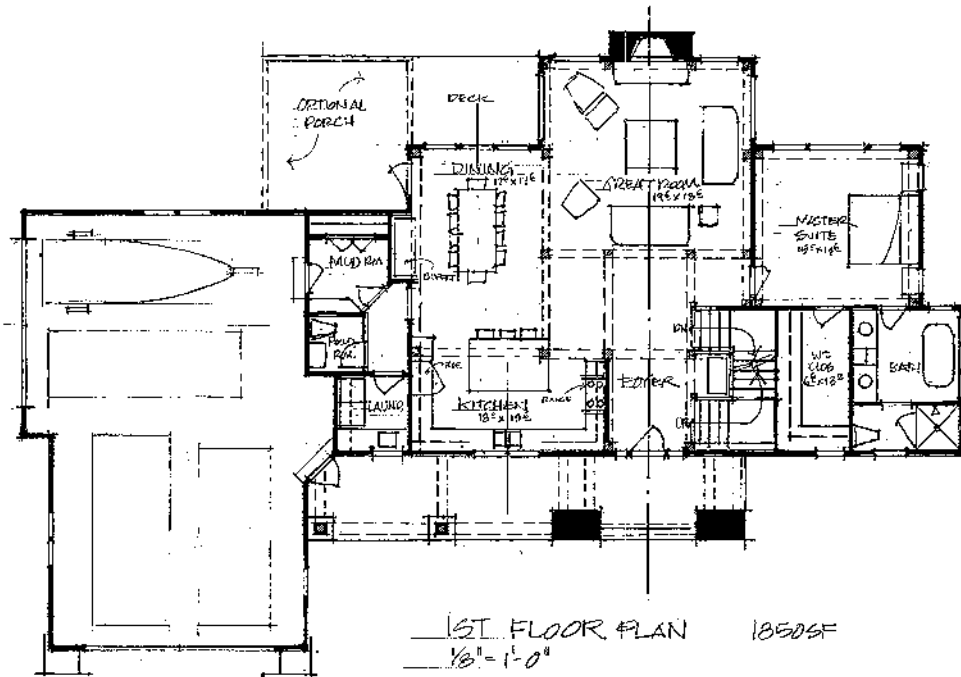
Looking for room for all your toys? The four stall garage offers plenty of room and is conveniently located near the kitchen. The second level provides two additional bedrooms, each with their own private bathroom. From the loft area, double doors lead out to your own private balcony. An array of classic details creates a wonderful and welcoming home for your family and friends.



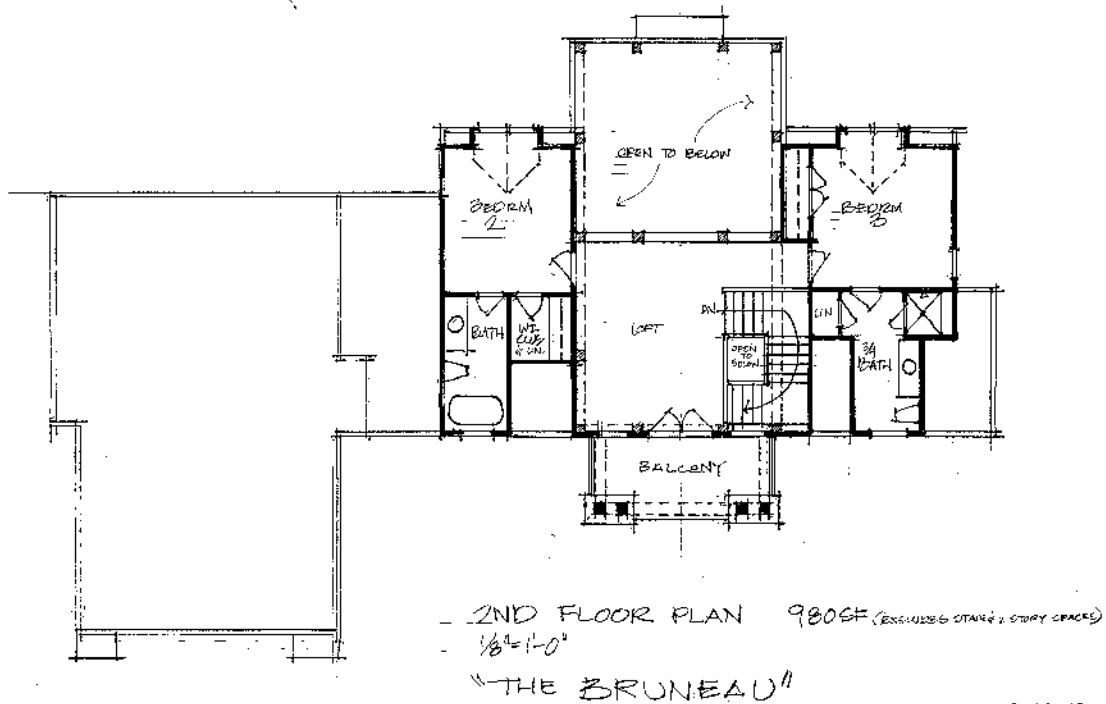
Phone: 320.763.9003 • 4941 HWY 27 E • Alexandria, MN 56308
www.BlueOxTimberFrames.com • Email: Info@BlueOxTimberFrames.com
©2010 Blue Ox Timber Frames

The Bruneau- 2,830 sq. feet, 3 Bedrooms, 3 Baths

12/15/10 - 01/19/11 (1)
 12/15/10 (1)
 12/15/10 (1)



12/15/10 - 01/19/11 (1)
 12/15/10 (1)
 12/15/10 (1)



Phone: 320.763.9003 • 4941 HWY 27 E • Alexandria, MN 56308
www.BlueOxTimberFrames.com • Email: Info@BlueOxTimberFrames.com
 ©2010 Blue Ox Timber Frames

The Colorado- 3,554 sq. feet, 4 Bedrooms, 3 Baths



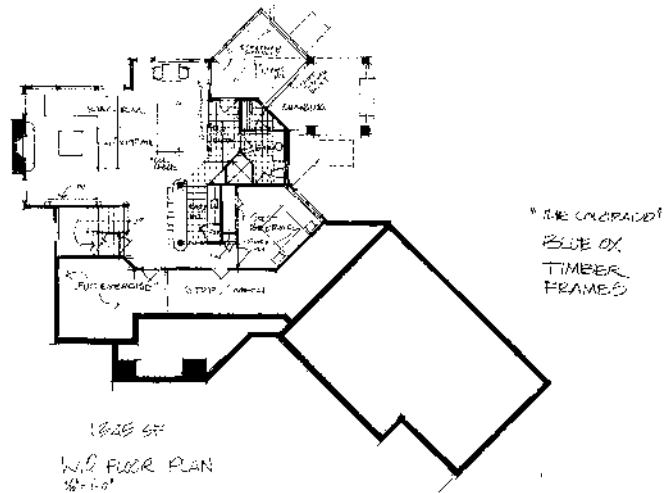
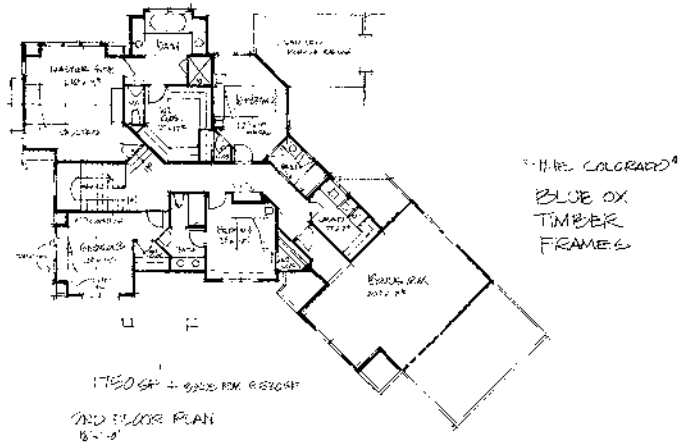
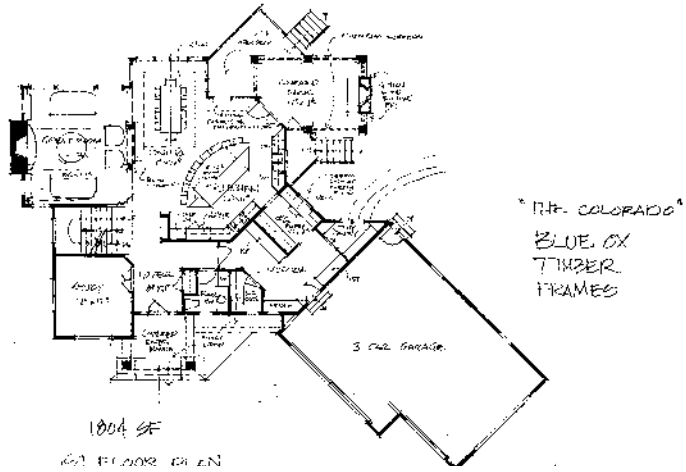
With a separation of public and private areas in this hybrid home, the Colorado is designed with the active family in mind. The kitchen boasts a large working island with ample room to gather around and a walk-through pantry to store all your necessities. The covered vaulted porch with optional outdoor fireplace is conveniently located next to the kitchen for easy transition to outdoor living.

This family home features all four bedrooms and a laundry room on the second floor along with a large bonus room that could be used as a play room or a theatre/game room. The optional lower level could function as a well appointed in-law suite, nanny quarters, or additional entertaining space providing privacy and function. This home offers many possibilities for the active family.

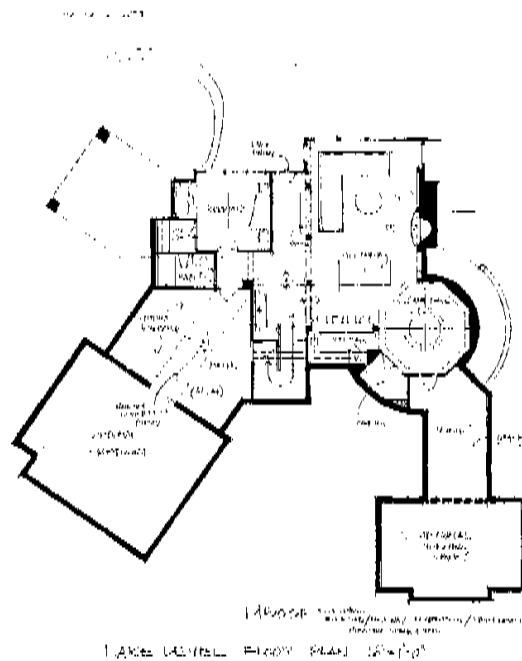
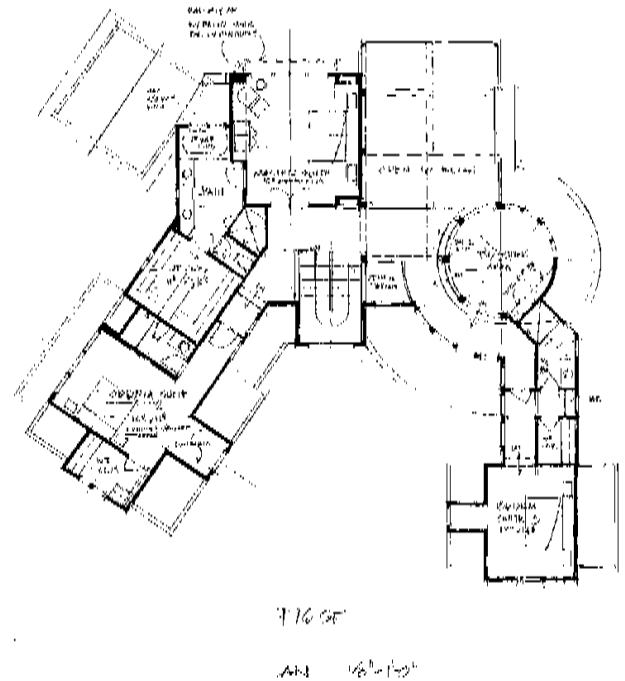
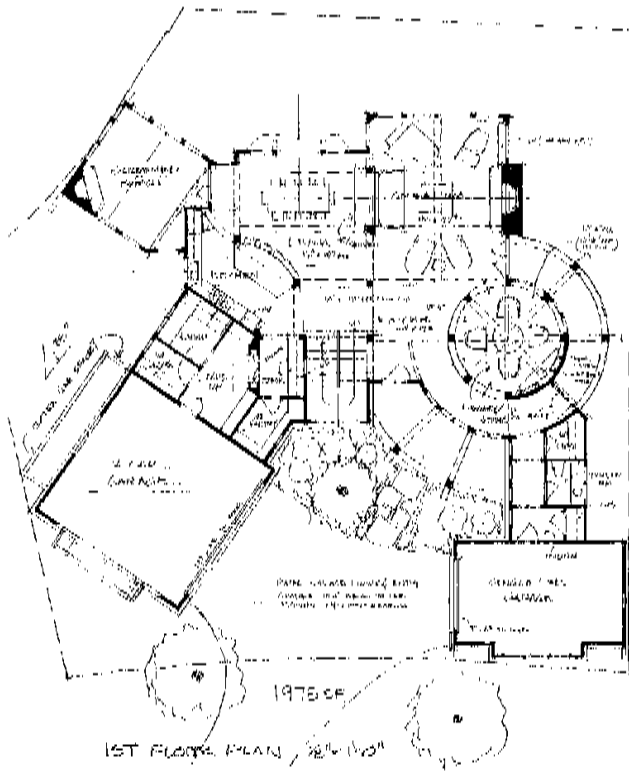


Phone: 320.763.9003 • 4941 HWY 27 E • Alexandria, MN 56308
www.BlueOxTimberFrames.com • Email: Info@BlueOxTimberFrames.com
©2010 Blue Ox Timber Frames

The Colorado- 3,554 sq. feet, 4 Bedrooms, 3 Baths

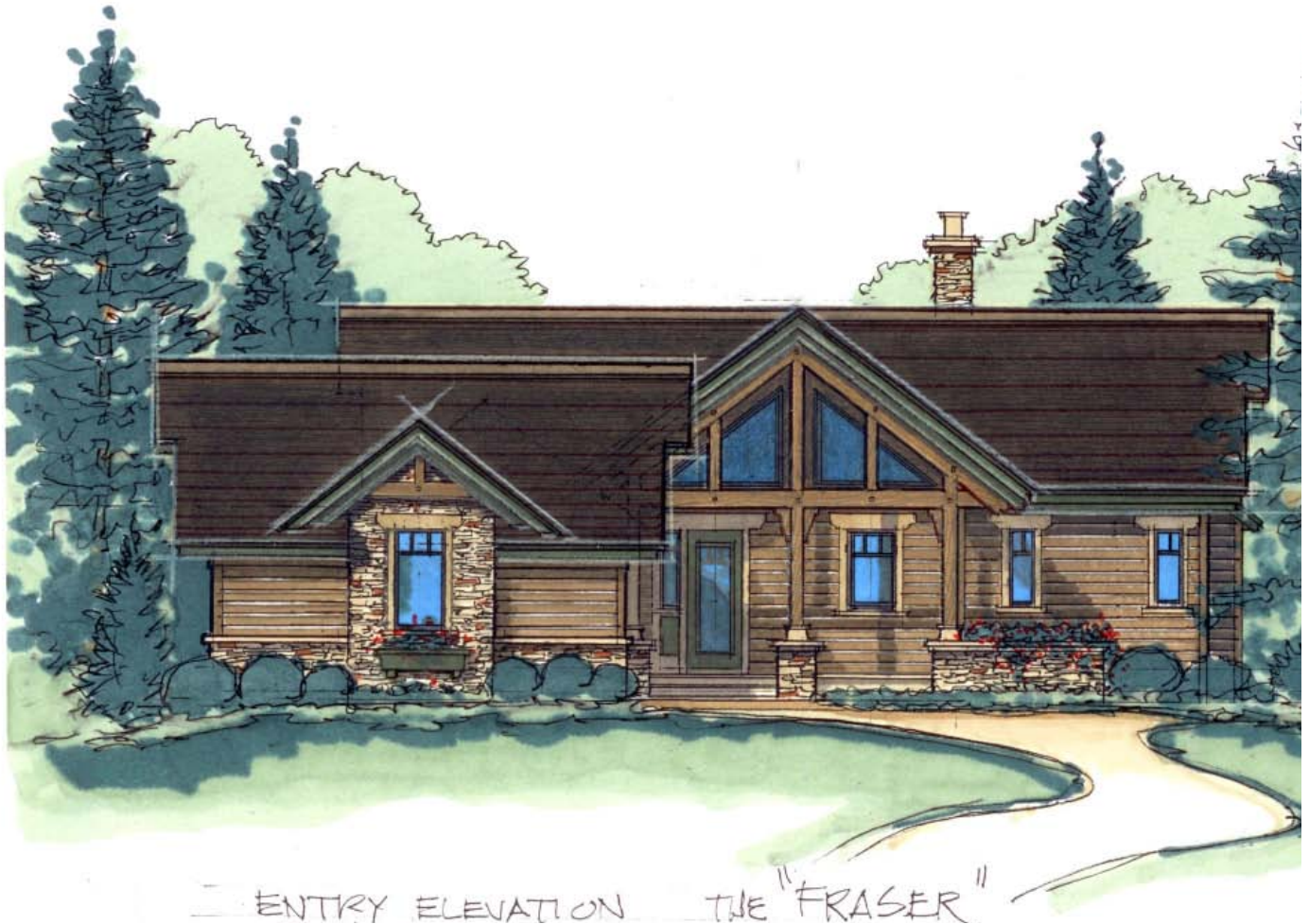


The Deschuettes - 5,401 sq. feet, 5 Bedrooms, 4 Baths



Phone: 320.763.9003 • 4941 HWY 27 E • Alexandria, MN 56308
www.BlueOxTimberFrames.com • Email: Info@BlueOxTimberFrames.com
 ©2010 Blue Ox Timber Frames

The Fraser- 2,585 sq. feet, 3 Bedrooms, 2 Baths



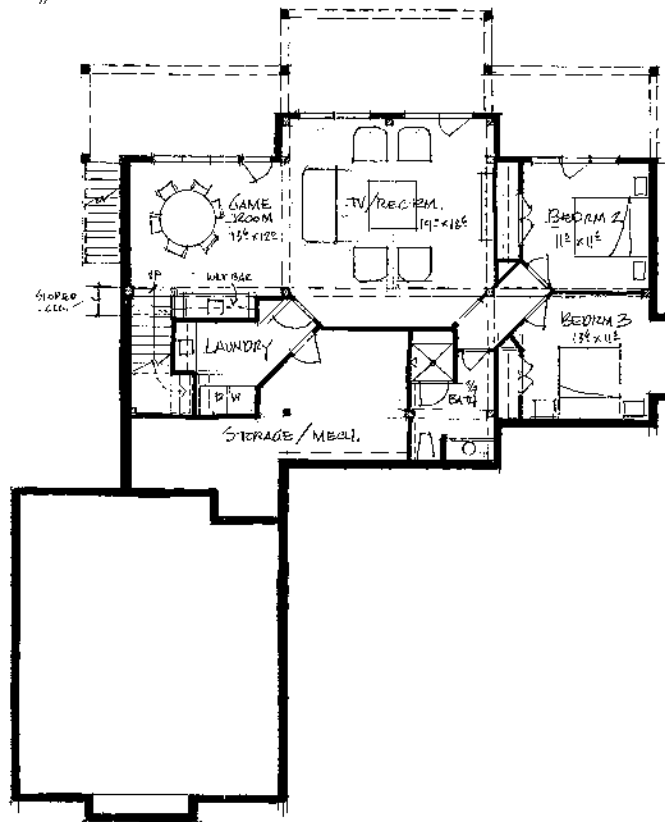
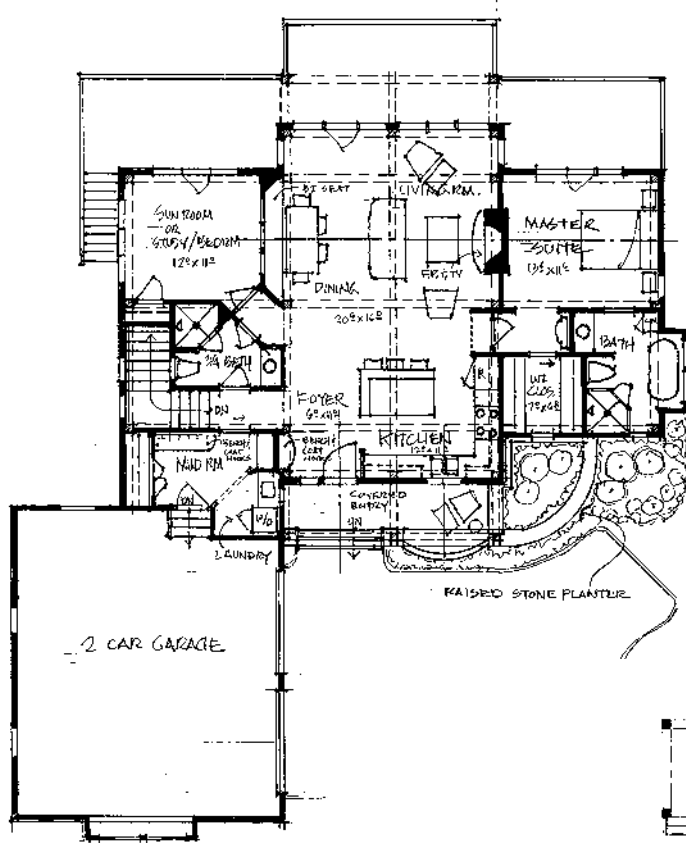
Packed with personality and great views, the Fraser is the perfect mountain retreat or lake-side get away. The moment you enter, this home offers an open feel concept with a rustic flair.

The main level offers two bedrooms and two bathrooms providing comfort and convenience. The optional lower level houses two additional bedrooms and a large recreational room, game room with bar and a patio that extends the living area into the outdoors.



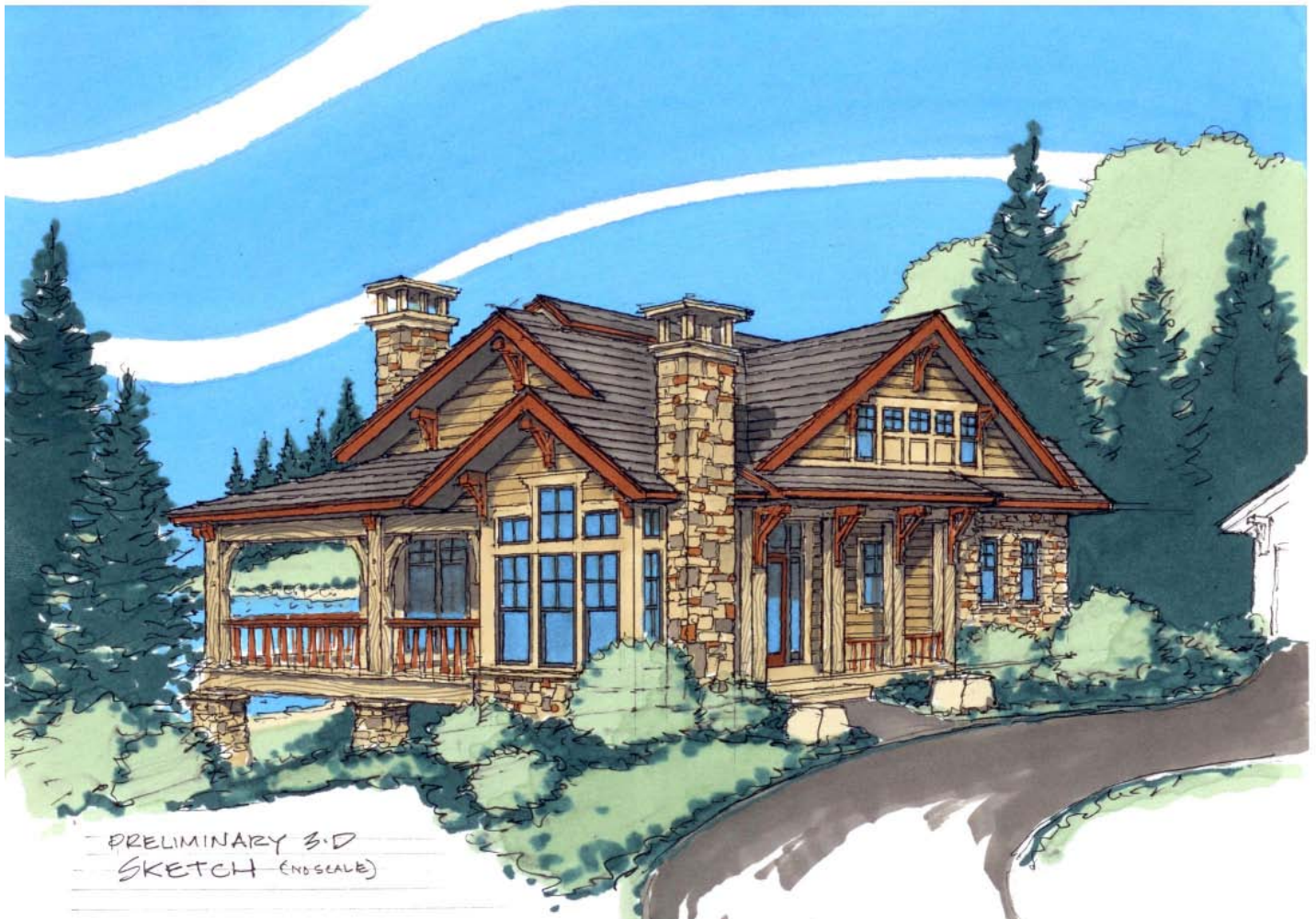
Phone: 320.763.9003 • 4941 HWY 27 E • Alexandria, MN 56308
www.BlueOxTimberFrames.com • Email: Info@BlueOxTimberFrames.com
©2010 Blue Ox Timber Frames

The Fraser - 2,585 sq. feet, 3 Bedrooms, 2 Baths



Phone: 320.763.9003 • 4941 HWY 27 E • Alexandria, MN 56308
www.BlueOxTimberFrames.com • Email: Info@BlueOxTimberFrames.com
©2010 Blue Ox Timber Frames

The Kettle- 2,142 sq. feet, 1 Bedroom, 2 Baths



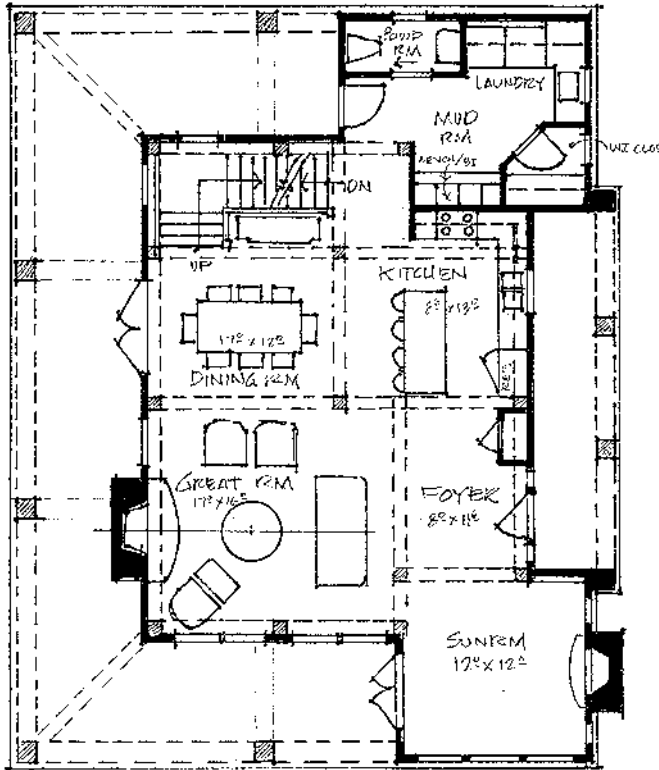
The Kettle is a home right out of your favorite story book. This is a quaint plan designed for either a weekend retreat or for those who are looking to simply live without sacrificing quality, space or character in a home.

Columns are all that separate the main rooms in this captivating home. The large kitchen island allows for additional sitting when entertaining or casual dining. The fireplace adds warmth and charm. Character abounds at every corner of this home.

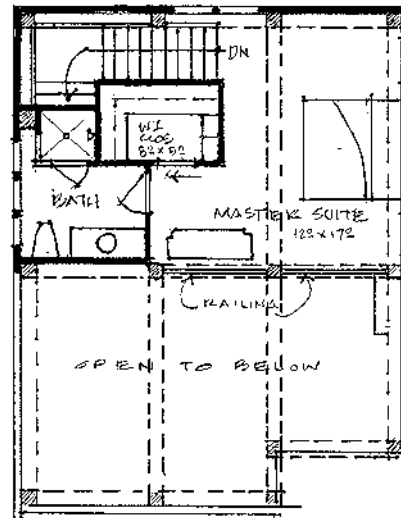


Phone: 320.763.9003 • 4941 HWY 27 E • Alexandria, MN 56308
www.BlueOxTimberFrames.com • Email: Info@BlueOxTimberFrames.com
©2010 Blue Ox Timber Frames

The Kettle- 2,142 sq. feet, 1 Bedroom, 2 Baths



1ST FLOOR PLAN 1160 SF
1/8" = 1'-0"



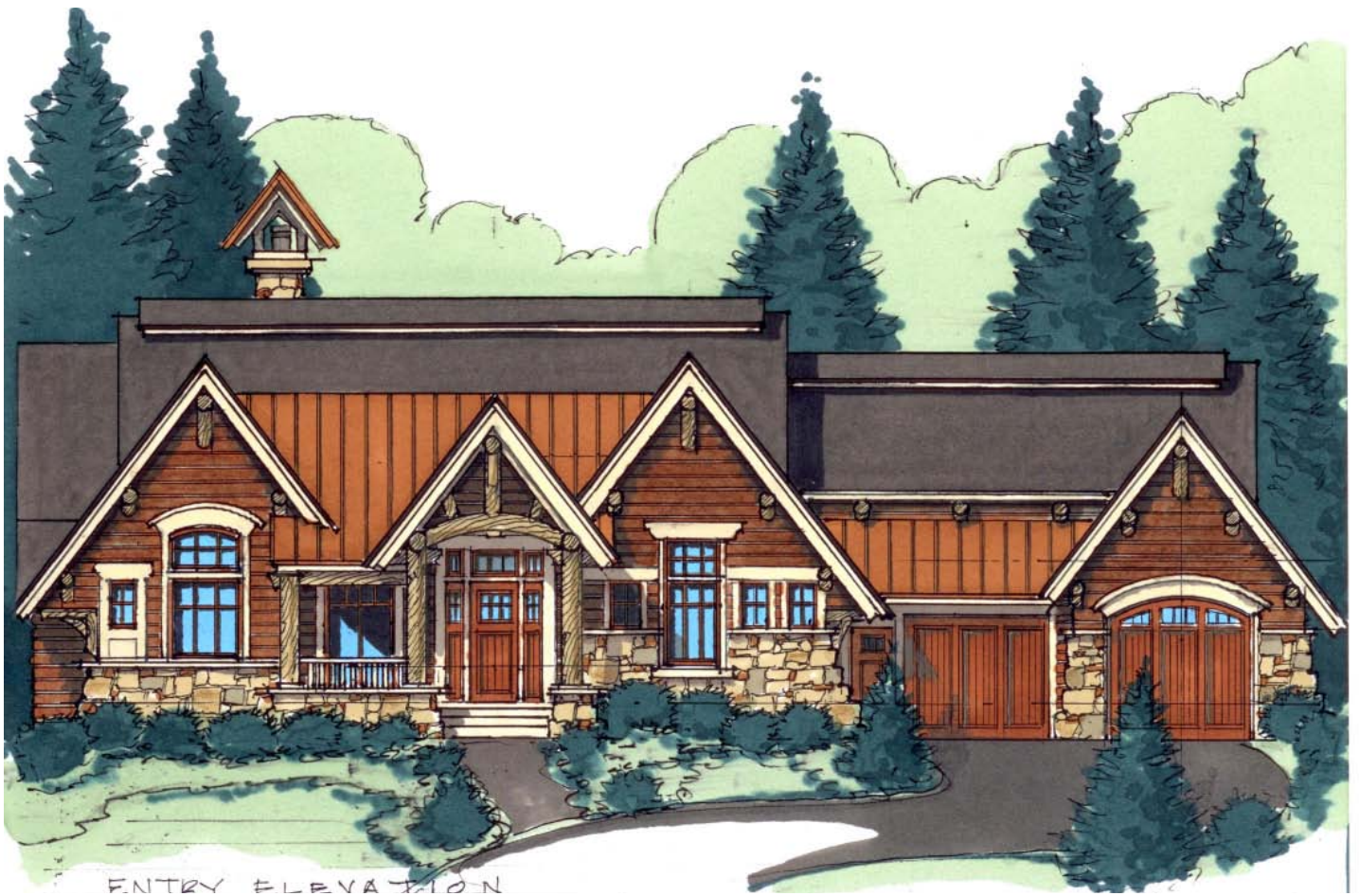
2ND FLOOR PLAN 416 SF
1/8" = 1'-0"

"THE KETTLE"

10.30.08



The Madison- 1,752 sq. feet, 1 Bedroom, 2 Baths



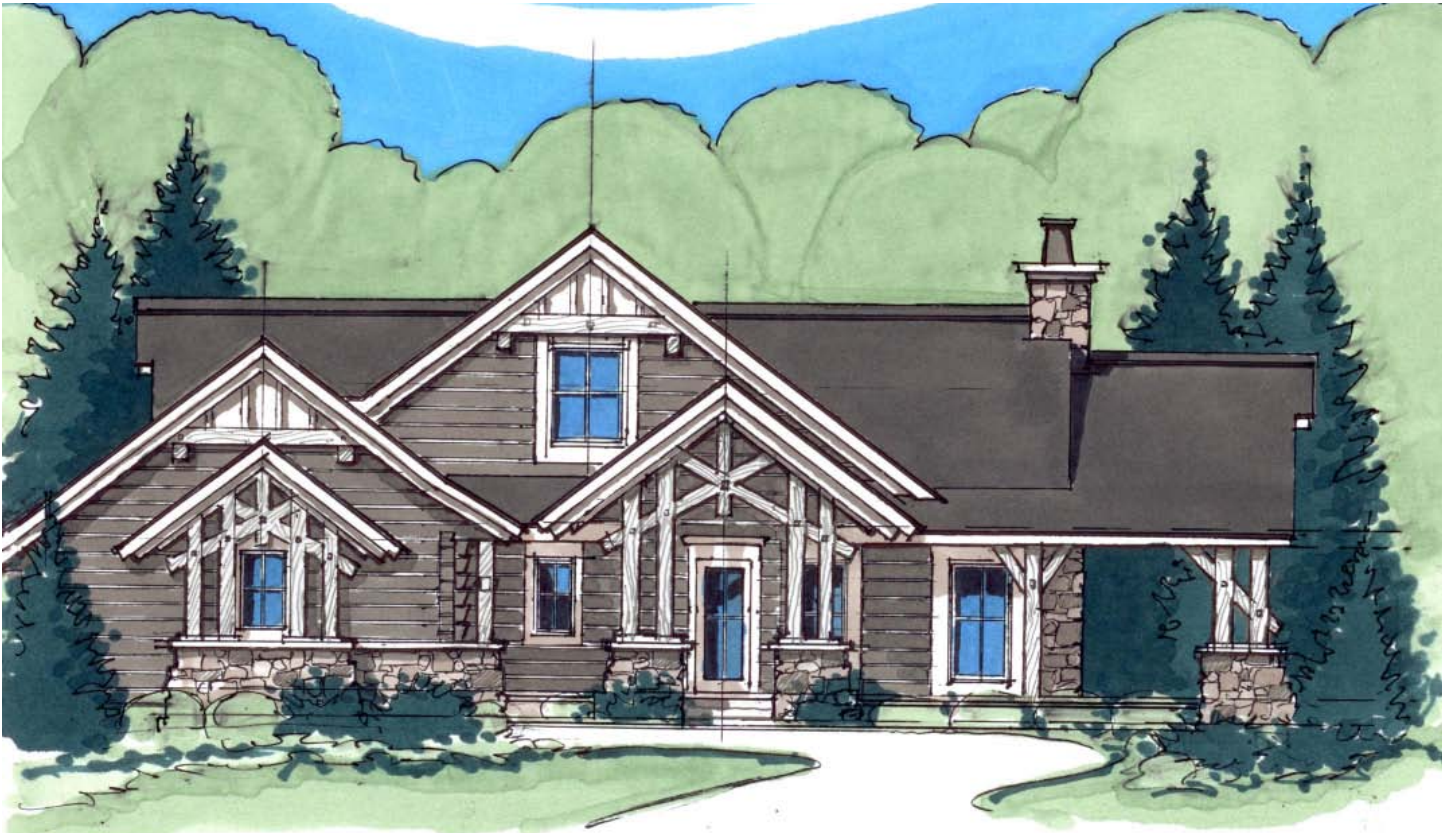
Designed for the single story living, the Madison combines open public spaces with a practical and accessible layout without sacrificing the comforts of a larger home. This home offers a beautiful and functional kitchen open to the great room allowing the host to interact with guests and family.

A large mudroom with walk-in closet and separate laundry room are conveniently located off from the kitchen and garage. The master suite enjoys a romantic fireplace and a well appointed private bath. If additional living area is needed, an option lower level adds space for a family room and additional bedrooms for guests.



Phone: 320.763.9003 • 4941 HWY 27 E • Alexandria, MN 56308
www.BlueOxTimberFrames.com • Email: Info@BlueOxTimberFrames.com
©2010 Blue Ox Timber Frames

The Russian ~ 2,142 sq. feet, 2 Bedrooms, 2 Baths

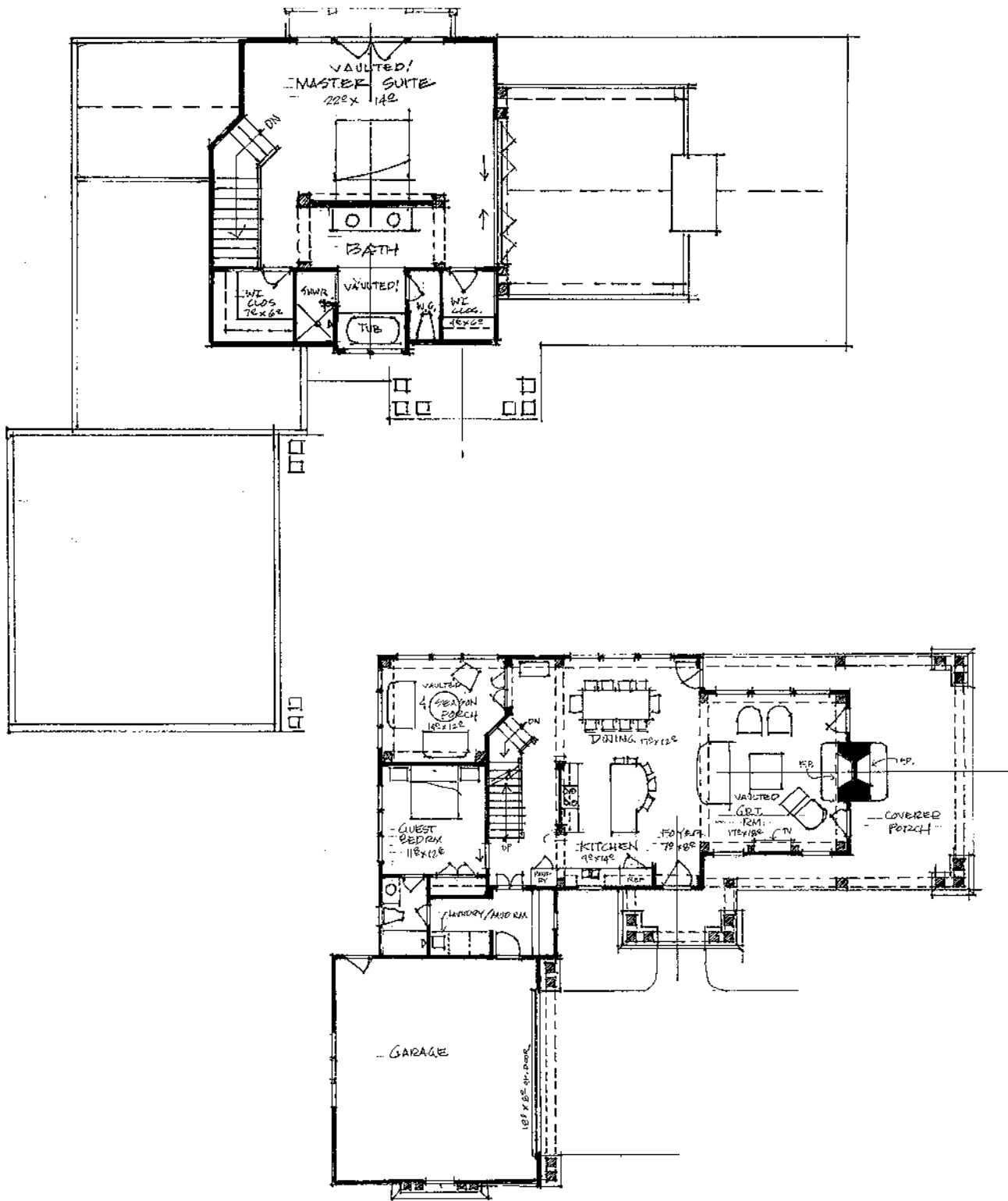


The Russian boasts open yet intimate entertaining spaces while integrating the convenience of both indoor and outdoor living. The cozy 4-season porch lets you experience all that nature has to offer while the large covered porch is perfect for summer cookouts and entertaining or just relaxing next to the beautiful stone outdoor fireplace. An optional lower level can add additional living space and bedrooms for family or guests.



Phone: 320.763.9003 • 4941 HWY 27 E • Alexandria, MN 56308
www.BlueOxTimberFrames.com • Email: Info@BlueOxTimberFrames.com
©2010 Blue Ox Timber Frames

The Russian - 2,142 sq. feet, 2 Bedrooms, 2 Baths



The St. Croix- 1,672 sq. feet, 3 Bedrooms, 2 Baths



The St. Croix offers a classic timber frame floor plan with added expanses of glass to maximize views in every direction. The two attached patios allow for accessible outdoor living and entertaining from both the dining and master bedroom. Near the dining room, an impressive kitchen is neatly tucked and easily accessible to the garage for ease of living.

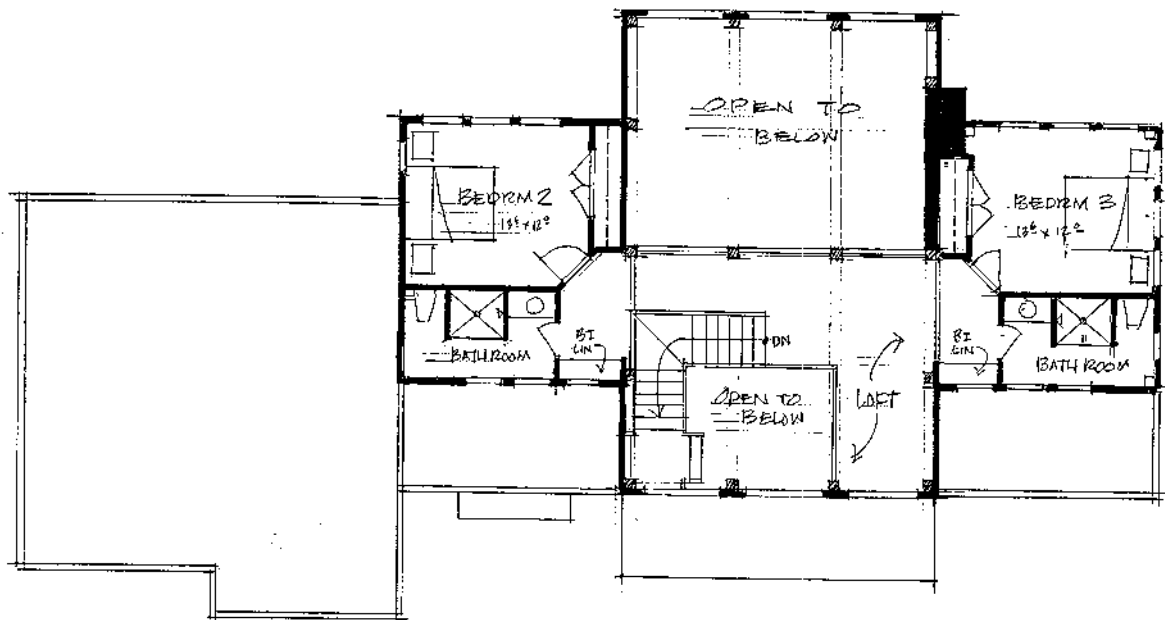
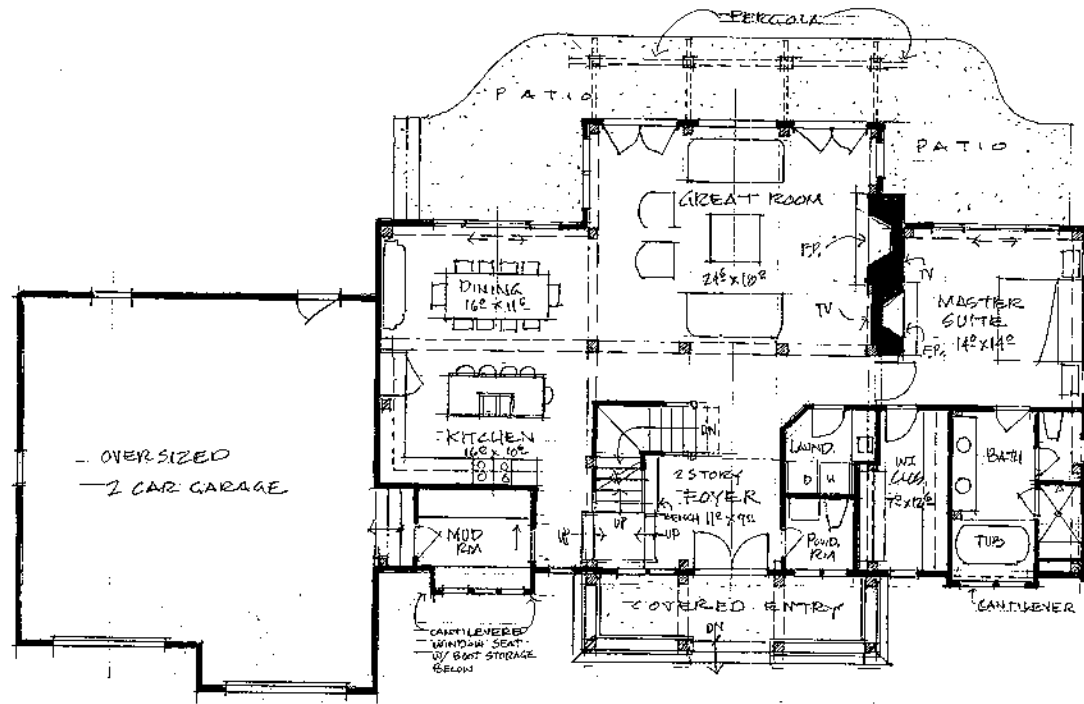
There are two additional bedrooms; each with their own bath on the second floor along with a cozy library that overlooks the great room below. Your family will enjoy taking advantage of the beautiful views through out the living space and entertaining or relaxing on the patios of this unique home.



Phone: 320.763.9003 • 4941 HWY 27 E • Alexandria, MN 56308
www.BlueOxTimberFrames.com • Email: Info@BlueOxTimberFrames.com
©2010 Blue Ox Timber Frames

The St. Croix- 1,672 sq. feet, 3 Bedrooms, 2 Baths

24 x 2



Phone: 320.763.9003 • 4941 HWY 27 E • Alexandria, MN 56308
www.BlueOxTimberFrames.com • Email: Info@BlueOxTimberFrames.com
 ©2010 Blue Ox Timber Frames